

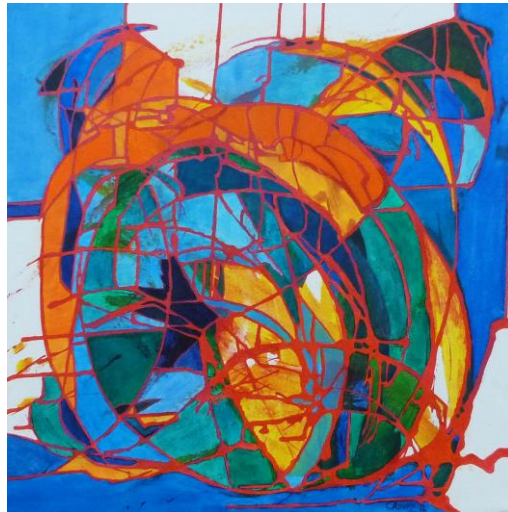
Utica Public Library 11th Annual

EXPRESS YOURSELF

ART CONTEST

FOR ADULTS (ages 18 and up)

ENTRIES WILL BE ACCEPTED ON FRIDAY, JAN. 25th
1:00 pm – 5:00 pm



We will only accept the first 55 entries for the contest.

CASH PRIZES! 6 CATEGORIES!

\$200.00 BEST OF SHOW PRIZE

Winner's will be announced at a Reception held on
Tuesday, Feb. 19th at 6:30 pm

Please read all the contest rules on the back of this flier.

Utica Public Library 11th Annual Express Yourself Adult Art Contest 2019

All flat surface media accepted (with some exceptions, please see all specifics below)

CONTEST RULES

- 1) The contest is open to all area adults, ages 18 and up.
- 2) The artists **NAME** and **PHONE #** must be on the back of the entry. **Title** of entry (if applicable) must also be on the back.
- 3) The acceptable media are **ALL (flat surface) MEDIA** *see below
- 4) All entries must be ready for wall display. (the entry must have a hook/wire on the back)
- 5) Participants may submit one entry. (one entry per person)
- 6) Acceptable maximum width for any entry is 48 inches (**4 feet**).
- 7) Entries may be dropped off in the **main lobby** of the library.

Entries will be accepted on

Friday, Jan. 25th from 1:00 pm – 5:00 pm.

THE FIRST 55 ENTRIES WILL COMPRISE THE CONTEST.

Winners announced at a reception on Tuesday, Feb. 19th at 6:30 pm

Cash Prizes and 6 EXCITING CATEGORIES!

Best of Show - \$200.00

Best Use of Detail – Best Use of Color – Best Abstract

Best Concept “Outside-the-Box” – Best Use of Black & White

Participants must pick up their entries on Friday, Mar. 1st or Saturday, Mar. 2nd – 8:30 – 5:00 pm

FLAT SURFACE MEDIA includes acrylic paint, oil paint, watercolor, pastel, charcoal, pen, pencil, colored pencil, crayon, ink, chalk, marker, washes, collage, textured surface, decoupage, & photos within a collage.

PLEASE ASK IF YOU ARE UNCERTAIN ABOUT THE MEDIA.

Digital works will be accepted with the following 2 requirements:

- 1) the artist must verify or document the original concept by means of an original sketch or design
- 2) the artist accepts that the entry will be labeled as a digital work

* the following media will **NOT** be accepted :

sculpture / pottery/ mobiles (this includes hanging sculpture & wall mounted sculpture), **photography / film / video** (photos within a collage or mixed media are acceptable)